



Extrusions • Painting • Anodizing • Fabrication • Thermal Break



45+
YEARS STRONG



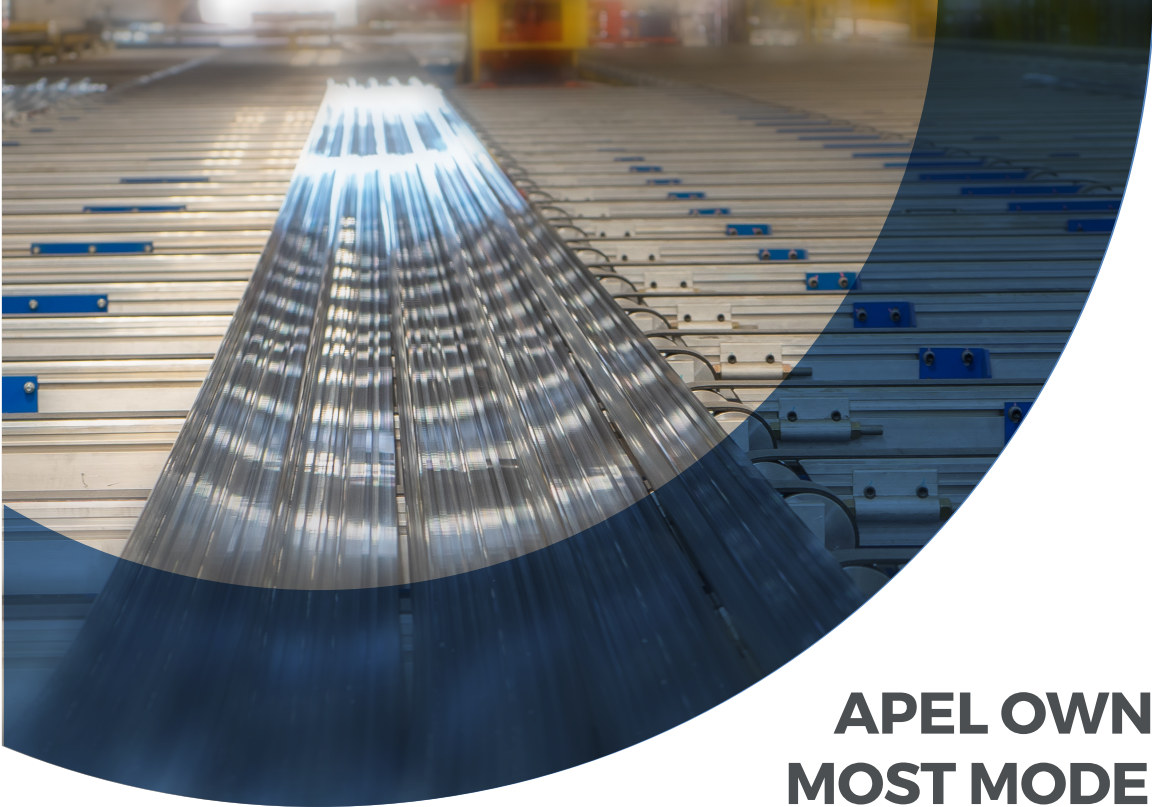
www.apelextrusions.com | ☎ (403) 279.3321

WELCOME

**APEL Extrusions
is North America's
leading independent
aluminum extruder
and finisher.**

With 45+ years of experience, APEL is a leading North American extrusion company with a commitment to continued investment in new equipment and capabilities to meet the current and future demands of the markets we serve. As active lean practitioners, we are perpetually improving our operations with our Continuous Improvement programs.





APEL OWNS ONE OF THE MOST MODERN FLEETS OF EXTRUSION PRESSES IN NORTH AMERICA

THE APEL ADVANTAGE

45+
YEARS STRONG

Acquiring over 45 years of experience doesn't happen by accident. APEL's commitment to our customers is our legacy, and we plan to continue to provide our very best far into the future.



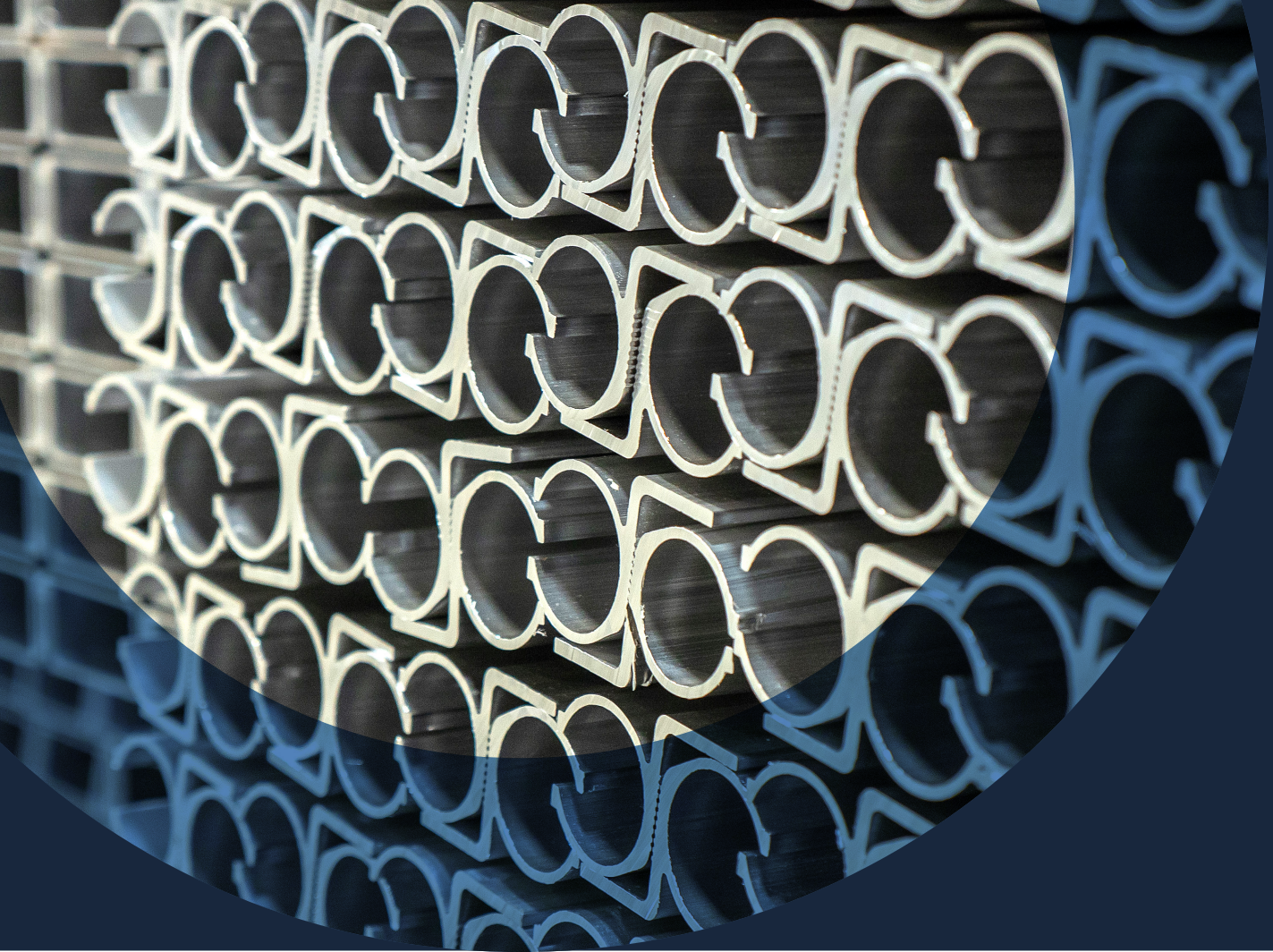
Strategic locations allow short freight distances, which provides APEL customers in western Canada and the Pacific Northwest next day delivery options.



Our success depends on the prosperity of our customers; to this end, APEL is committed to offer our customers personalized, first-class service experiences.



Success loves speed. APEL is known for our accelerated service: we commit to a 2-week lead time for mill finish and 3 weeks for most finished products.



About APEL

APEL Extrusions will be a market leader in high-performance manufacturing through superior customer service, continuous improvement, and safe, environmentally-sound operations. We continue to effectively meet the current and future requirements of our customers, shareholders, employees, and other stakeholders.

OUR MISSION

Our success is contingent upon providing products and services that enable our customers to be successful. Knowing and understanding their specific needs, goals, objectives, and future plans are critical to growing with our customers by creating value over the long term.

HIGH PERFORMANCE

Continuous improvement is an ongoing process at APEL that we achieve by seeking out the best practices, equipment, and people to do the job. Our facilities are new, modern, and well-equipped to serve our customers. We strive to maintain the highest levels of operational excellence as we keep up-to-date with assurance initiatives and continue our quest to constantly improve our quality, optimize manufacturing, and respond quickly to market demands.

OUR CUSTOMERS

Our world revolves around our customers and quality is not a department, but a way of doing business. Building strong relationships with our partners has always been our goal. By interacting with customers on a regular basis, we know their products and needs, giving us a deep understanding of each customer's end-use application.

EXTRUSIONS

APEL houses one of the most modern fleets of presses in North America. With two presses in Calgary and three in Coburg, Oregon, APEL is ideally situated to supply all western North American markets.

CALGARY, ALBERTA.

PRESS 1

2011 UBE 2000 Ton, complete with 2011 Granco Clark handling equipment and configured to use 7-inch Log (Hot Saw).

PRESS 2

2003 UBE 2500 Ton complete with 2003 Turla and 2009 Granco Clark handling equipment and configured to use 8-inch Log (Hot Saw).

COBURG, OREGON.

PRESS 3

2009 UBE 2000 Ton, complete with 2009 Granco Clark handling equipment, configured to use 7-inch Log (Hot Saw).

PRESS 4

2014 UBE 3300 Ton, complete with 2014 Granco Clark handling equipment, configured to use 9-inch Log (Hot Saw), fitted with a robust, top of the line water quench system.

PRESS 5

2019 UBE 2000 Ton, complete with 2019 Granco Clark handling equipment, configured to use 7-inch Log (Hot Saw).



INDUSTRIES SERVED



**BUILDING AND
CONSTRUCTION**



TRANSPORTATION



**YOUR
INDUSTRY**



ELECTRICAL



SOLAR



**CONSUMER
DURABLES**

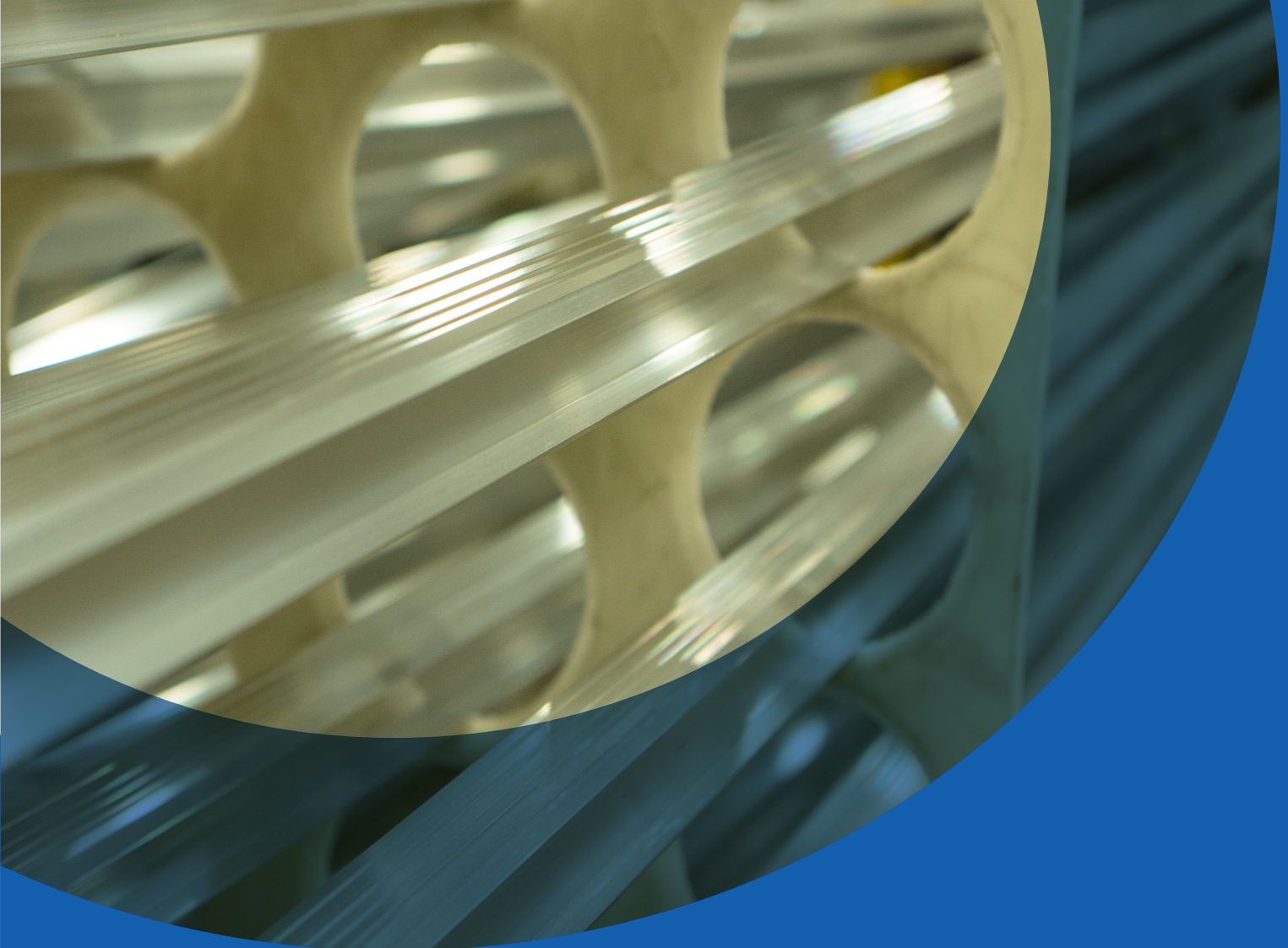


PAINTING

APEL Calgary houses a horizontal electrostatic paint line capable of finishing up to 24'3" lengths in both wet and powder paint coatings. We are an approved applicator of both Valspar/Sherwin Williams and PPG paints.

APEL's chromate pre-treatment process meets or exceeds AAMA requirements with end products supplied to AAMA 2603, 2604, and 2605 specifications.

Our updated facilities include a pre-treat tunnel for our paint line which allows us to deliver the best possible painted and powder coating services on the West Coast.



ANODIZING

Development

APEL Calgary installed a semi-automated anodizing line in 2008 and upgraded it to provide “acid etch” capability in 2010. As part of our anodizing line upgrade, we replaced our aging waste treatment system with a new automated facility, ensuring 100% environmental compliance of all finishing processes.

Our line is capable of producing clear, champagne, bronze and black finishes in up to 24 ft. 3 in. lengths meeting the American Architectural Manufacturer’s Association (AAMA) standard 611-12.



Our Work

FABRICATION

APEL offers a variety of aluminum fabrication services, and we continue to expand our capabilities to provide unique solutions for your secondary aluminum extrusion needs. We offer most standard fabrication services and look forward to working with customers to develop custom solutions to meet any fabrication requirement.

OUR PROCESS INCLUDES:

- Close tolerance cut-to-length, $\pm 1/32"$ (0.8mm) from lengths 0.75" (19mm) - 24' (7,315 mm) and maximum profile height of 5.5" (140mm)
- Mechanical and hydraulic punch pressing
- Custom standalone fabrication systems (drilling, punching, notching, coping)



THERMAL BREAK

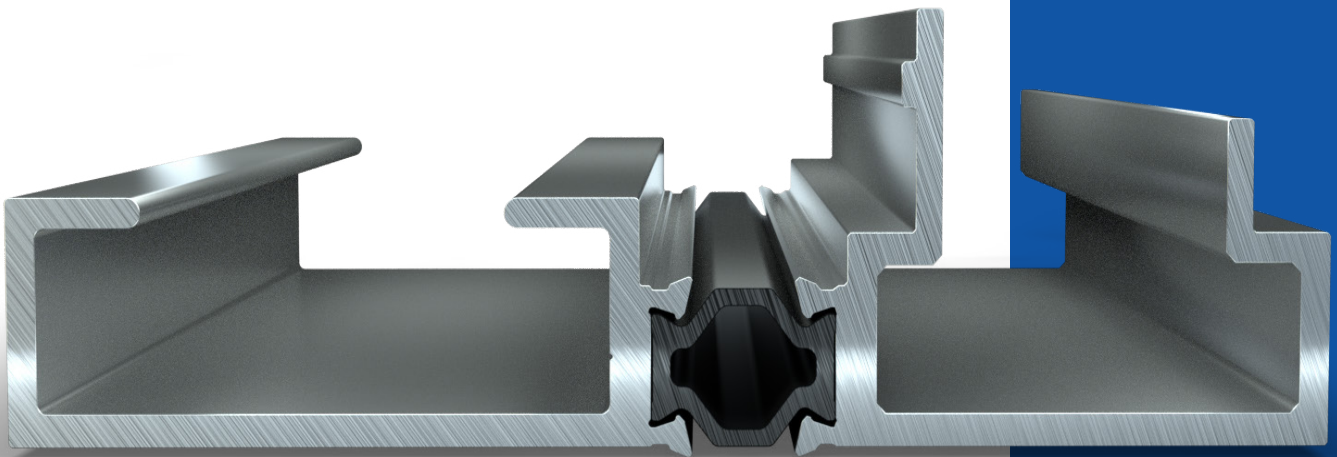
APEL offers custom thermal break components to meet your fenestration needs, capable of utilizing a broad range of insulating profiles with exceptional structural performance.

The use of an engineered polyamide strut between inside and outside aluminum profiles of various widths provides our customers with multiple system configurations.

OUR PROCESS CONSISTS OF THREE STANDARD STEPS:

- Knurling the aluminum profiles
- Insertion of a polyamide strut
- Rolling of the aluminum profiles to the polyamide creating a precisely fit structural assembly

APEL has the ability to be flexible with the design utilizing both existing and future production lines to meet your every need. Current assembly maximum dimensions 356mm (14") wide x 127 mm (5") high x 7,315 mm (24') long, ie (part A + Istrut + part B = 14" total width).



For more information on insulating strut systems, contact us:
Canada: (403) 279.3321 US: (541) 743.0270



APEL EXTRUSIONS LTD

7929 – 30th Street S.E.
Calgary, AB T2C 1H7
PH: (403) 279.3321
FAX: (403) 236.2944

APEL EXTRUSIONS INC

91284 N. Coburg Industrial Way
Coburg, OR 97408
PH: (541) 743.0270
FAX: (866) 830.6768

APEL EXTRUSIONS INC

Coming Soon



www.apelextrusions.com